

## Neuchatel Graduate Conference of Migration and Mobility Studies 2018

### Practical Information

#### Getting around Neuchâtel

For all accommodation within the city of Neuchâtel and beyond, a “Neuchâtel Tourist Card” is offered by your hotel, during your stay, allowing for free access to public transportation. For more information, see [here](#).

Please note that the tourist card will be given to you when you check in. Make sure you buy a valid transport ticket for any public transport you take before check-in. Random checks are frequent and fines quite high. Neuchâtel is relatively small and you can walk down easily from the train station to where most of the hotels are located (see below links and tourist office link for accommodation

<https://www.neuchateltourisme.ch/en/accommodation.html>).

#### Conference Venue

The venue is in the main building of the University of Neuchâtel, Av. du 1er-Mars 26, 2000 Neuchâtel (<https://goo.gl/maps/gpsHUMCFQM22>). A luggage room will be available. Please enquire at the registration desk.

**The registration desk will be located in front of the plenary room (C45, 1<sup>st</sup> Floor)**

#### Directions from the train station

The venue is just a short walk downhill from the train station by way of the Ruelle Vaucher (Itinerary: <https://goo.gl/maps/wKSJCX1YeEn>). A funicular is also available (lower level of the train station). See this link <https://goo.gl/maps/5KuGmDAafoN2>.

#### Lunches

Lunches will take place in the cafeteria on the Ground Floor.

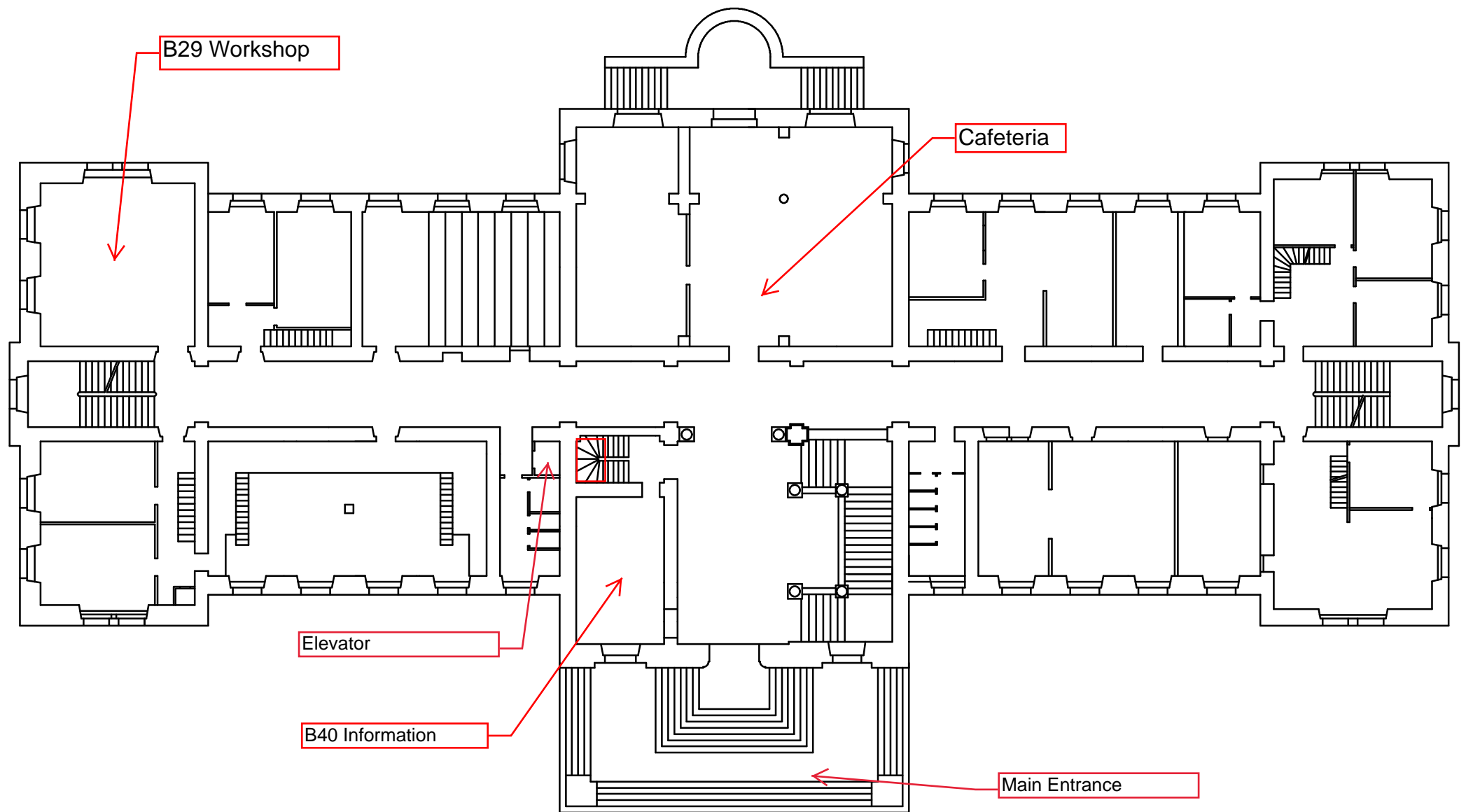
#### Location of Conference Reception

The Conference Reception will be held on a boat at the port of the city of Neuchâtel (<https://goo.gl/maps/V9aegh2oip12>). The Cocktail Dinner will begin at 19:00.

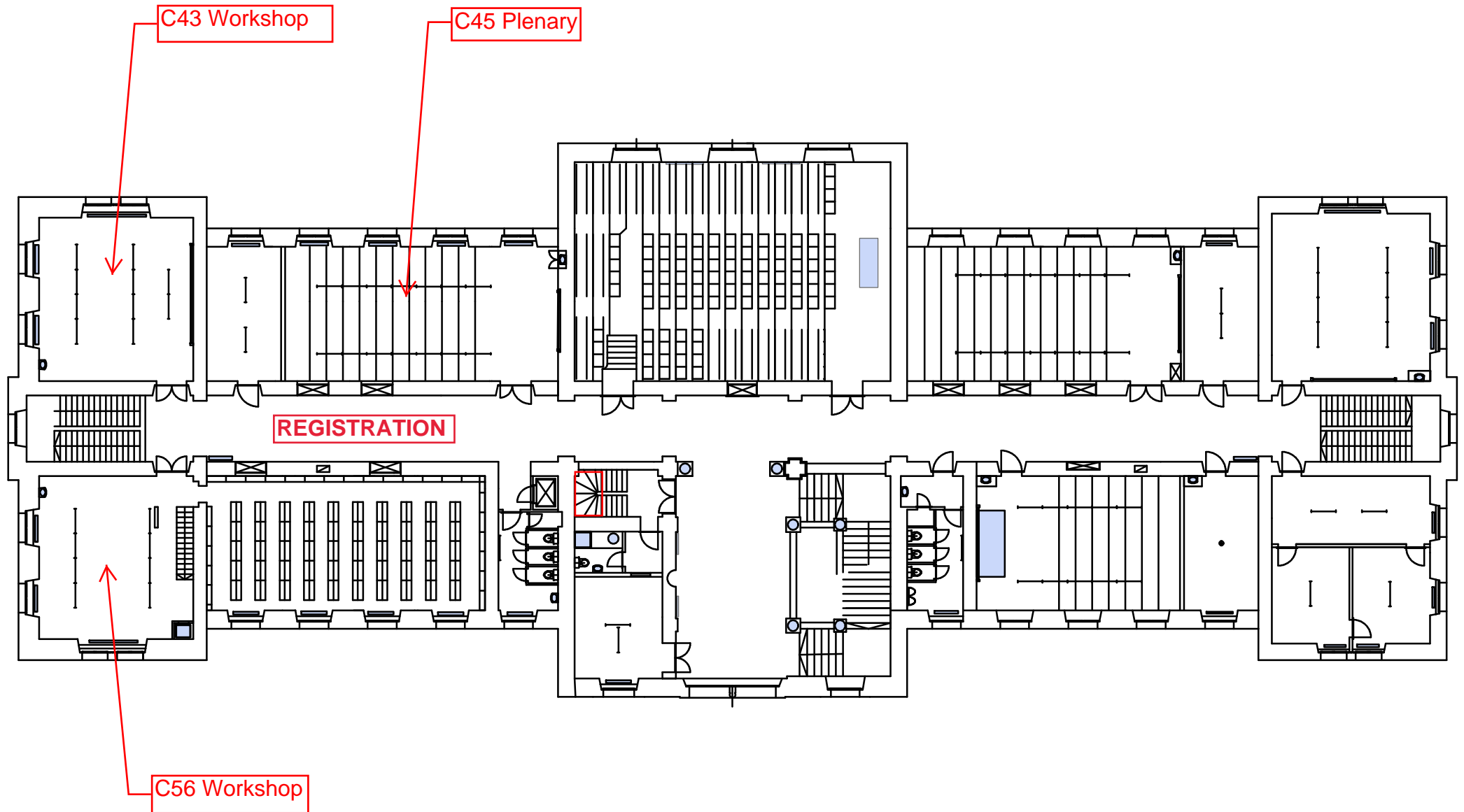
#### Tourist Information

If you are staying on beyond the conference, take advantage of your Neuchâtel Tourist Card to explore the rest of the canton. The tourist office offers many interesting cultural and culinary tours and visits. Please see [here](#)

[Touristic Apps](#) for Neuchâtel and surroundings.



**GROUND FLOOR**



1st Floor