

## Labor-Market Integration of Migrants & Refugees and Inequalities

### Research Questions

- One paper analyzes the labor-market outcomes of natives and migrants in European countries, and how they vary by gender, period and country
- Another paper examines the economic integration of refugees in Switzerland, the related inequalities, and the role of initial conditions

### Data and Methods

- A linear probability model to estimate the effect of migration status (initial gap) and additional year in host country (integration) on one's labor market outcomes, using EU Labor Force Survey
- Leverage the quasi-random allocation of refugees to cantons to estimate the causal impact of initial conditions on refugees' labor market outcomes in Switzerland, using register data

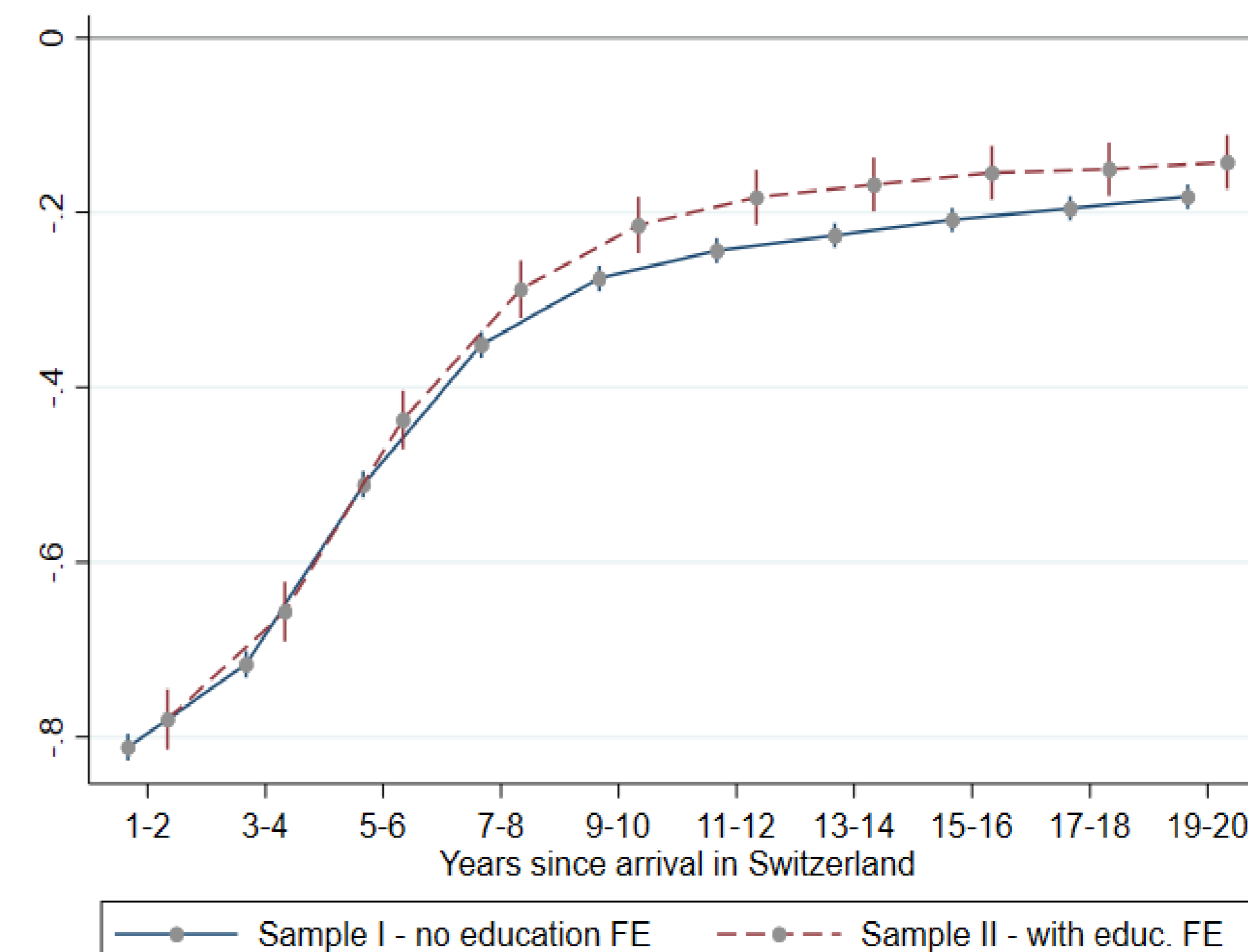
### Key Findings

#### Migrants in Europe

- Migration is negatively associated with the probability of being employed and an additional year spent in host country is on average positively associated with the probability of being employed
- Female migrants face a larger disadvantage than male migrants. They assimilate into the labor market more rapidly than male migrants
- Male migrants overcome initial gap and converge to the natives after 10 years

#### Refugees in Switzerland

- Employment rates of refugees increase slowly over time to reach, more than ten years after their arrival, a level which is about 15 pp lower than those of comparable natives
- The integration profile depends on the refugees' age on arrival



- We find significant negative effects of initial unemployment rates on employment probabilities of refugees, an effect which persists over time
- A change towards more restrictive (initial) attitudes to refugees and immigrants increases employment probabilities of refugees

Lee, Taehoon, Giovanni Peri, and Martina Viarengo (2020). "The gender aspect of immigrants' assimilation in Europe", IZA Discussion Paper No. 13922.

Müller, Tobias, Pia Pannatier, and Martina Viarengo (2022) "Labor Market Integration, Local Conditions and Inequalities: Evidence from Refugees in Switzerland", World Bank Policy Research Working Paper 9914.

## The Impact of Posted Workers on Natives' Earnings

### Research Question

- How did native construction sector workers respond to an influx of foreign posted workers after the Eastern enlargement of the EU?

### Data and Methods

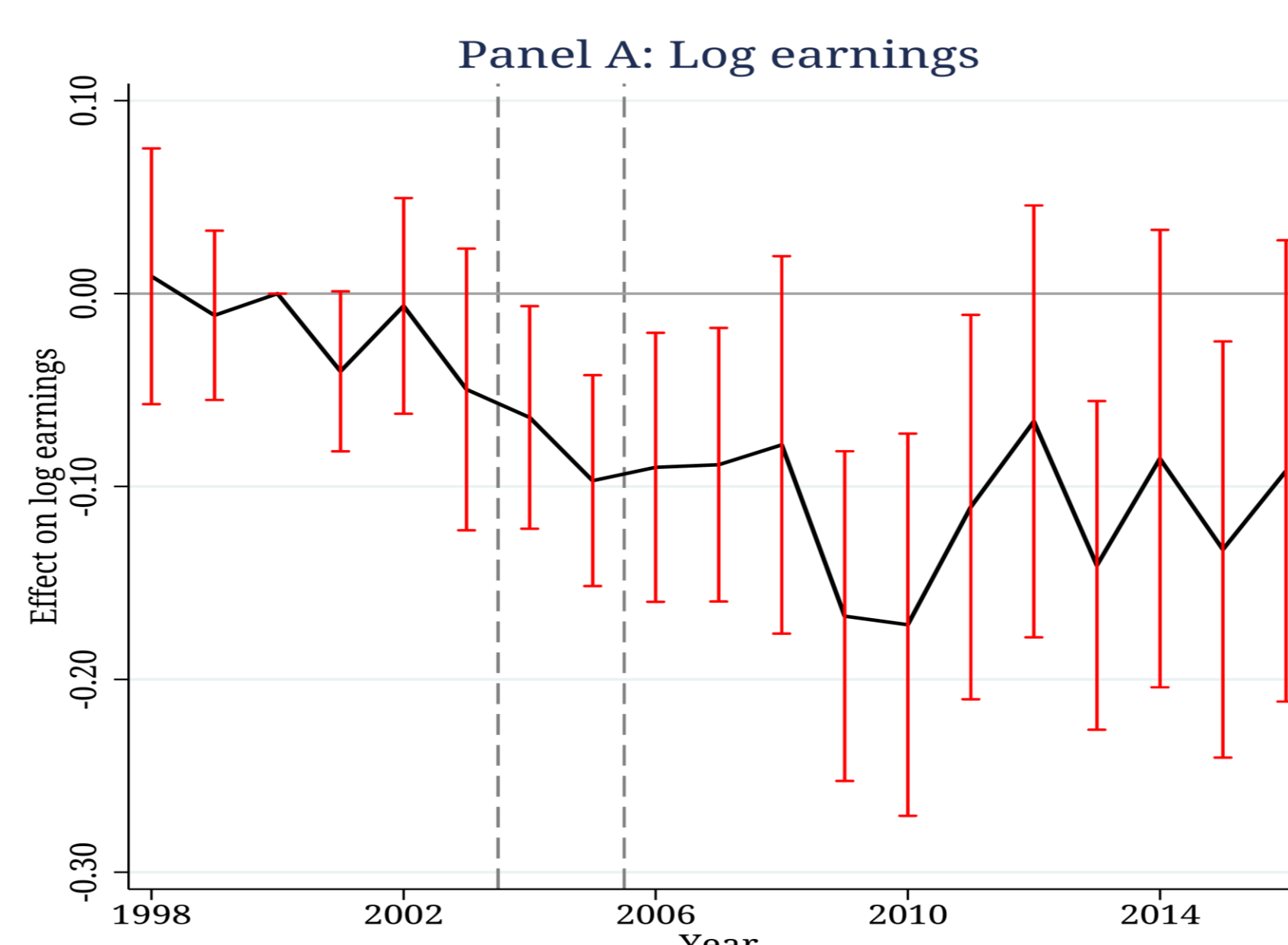
- Compare natives who worked in more exposed occupations and regions to individuals in control occupation and less exposed regions in a triple-difference framework
- Follow individuals over time using register data from Finland

Kuosmanen, Isa and Jaakko Meriläinen (2020). "Labor Market Effects of Open Borders: Lessons from EU Enlargement",



### Key Findings

- Annual earnings drop by 9% relative to less exposed construction sector workers
- The effect occurs during a transition period when free movement of workers was still restricted
- Posted workers could come instead as they fall under the free movement of services



### IP25: Project Team (\*poster authors)

**Prof. Tobias Müller\***, University of Geneva.

**Dr. Isa Kuosmanen\***, post-doctoral researcher, University of Geneva.

**Qingyang Lin\***, PhD student, The Graduate Institute, Geneva.

**Prof. Martina Viarengo\***, The Graduate Institute, Geneva.

Taehoon Lee, PhD student, The Graduate Institute, Geneva.

Pia Pannatier, affiliated researcher, PhD student, University of Geneva.

### Other papers

Müller, Tobias, and Silvio Hong Tiing Tai (2020). "Individual attitudes towards migration: A re-examination of the evidence." *Canadian Journal of Economics* 53(4), 1663-1702.

Ariu, Andrea, Tobias Müller and Tuan Nguyen (2022). "How Do Labor Markets Adjust to Immigration? The Role of Firm Heterogeneity in a Regional Setting", Working Paper.

Lin, Qingyang (2022). "Immigration Quotas and Anti-Immigration Attitudes: An Evaluation of Swiss Migration Policy."

