

Neuchâtel Graduate Conference of Migration and Mobility Studies 2019

Practical Information

Getting around Neuchâtel

For all accommodation within the city and canton of Neuchâtel, a "Neuchâtel Tourist Card" is offered by your hotel, during your stay, allowing for free access to public transportation. For more information, see this link: <https://www.j3l.ch/en/Z10779/neuchatel-tourist-card-page>.

Please note that the tourist card will be given to you when you check in. Make sure you buy a valid transport ticket for any public transport you take before check-in. Random checks are frequent and fines quite high. Neuchâtel is relatively small and you can walk down easily from the train station to where most of the hotels are located, see below links and tourist office link for accommodation: <https://www.j3l.ch/en/Z10488/neuchatel-tourism>.

Conference Venue (Sessions)

Here you will find a general map of the area with links to the main points of interest (including pre- and post-conference side events): https://drive.google.com/open?id=16vYNV0n0jy2ReGO8RO3UNQJst-Ak_SCz&usp=sharing. Neuchâtel is small so everything is within a short walking distance.

The sessions will take place in the University of Neuchâtel at Rue Abram-Louis Breguet 2, 2000 Neuchâtel in the following rooms

3rd Floor: 3.410, 3.414, 3.416 (Sessions)

Ground Floor: R.110 (Plenary)

A luggage room is available. Please enquire at the **Registration Desk (3rd Floor)**

Lunches

Lunches will take place in the ground-floor cafeteria at Av. du 1er-Mars 26

Location of Conference Cocktail Dinner

Les Bains des Dames, Neuchâtel: <http://www.bainsdesdames.ch/fr>. From Abram-Louis Breguet 2 by foot: <https://goo.gl/maps/LM4ShQokXdZ4utb69>. This will be a cocktail dinner.

Tourist Information

If you are staying on beyond the conference, take advantage of your Neuchâtel Tourist Card to explore the rest of the canton. The tourist office offers many interesting cultural and culinary tours and visits: <https://www.j3l.ch/en/Z10488/neuchatel-tourism>.

Neuchâtel Graduate Conference of Migration and Mobility Studies

12 - 13 September 2019

Area Map

 Neuchâtel Train Station



Venue: Rue Abram-Louis-Breguet 2



Lunches: Avenue du Premier-Mars 26



Cocktail Dinner 12.9: Les Bains des Dames



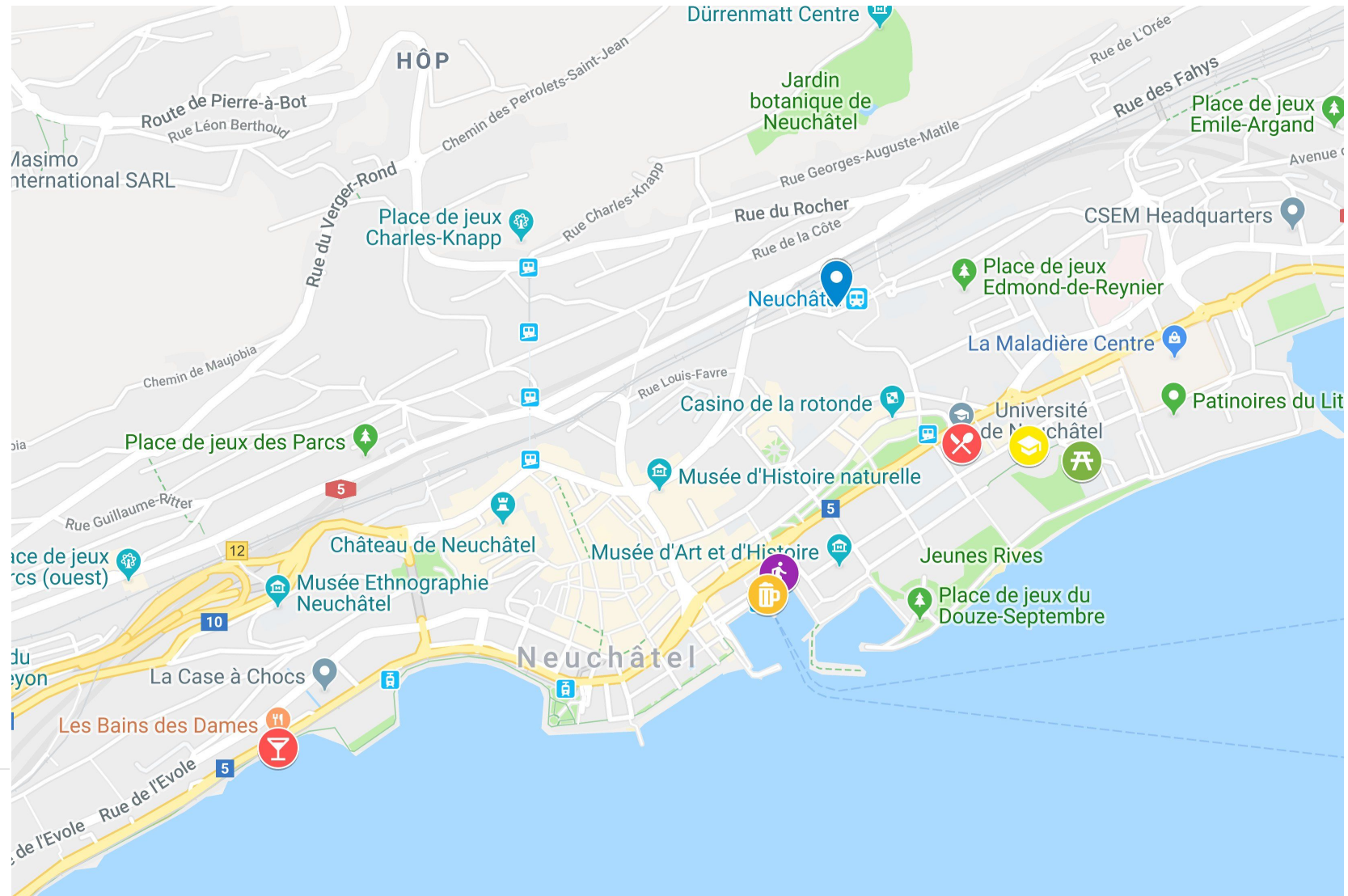
Walking Tour meeting point on 11.9 at 16:15: Bar au Lac

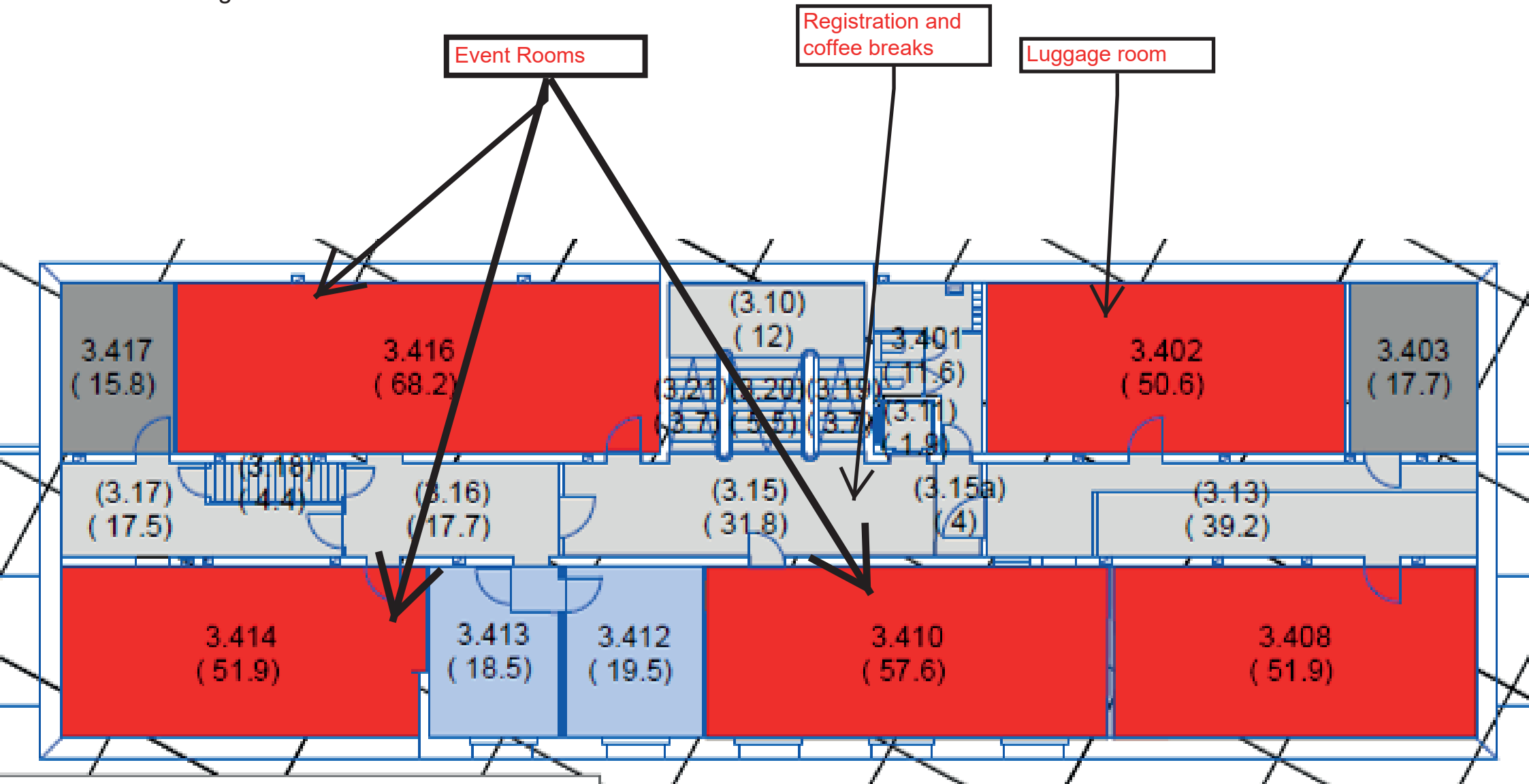


Pre-conference apéro 11.9 at 17:30: Bar du Lac



Potluck Picnic meeting point 13.9 at 18:00: Espace Tilo-Frey 1

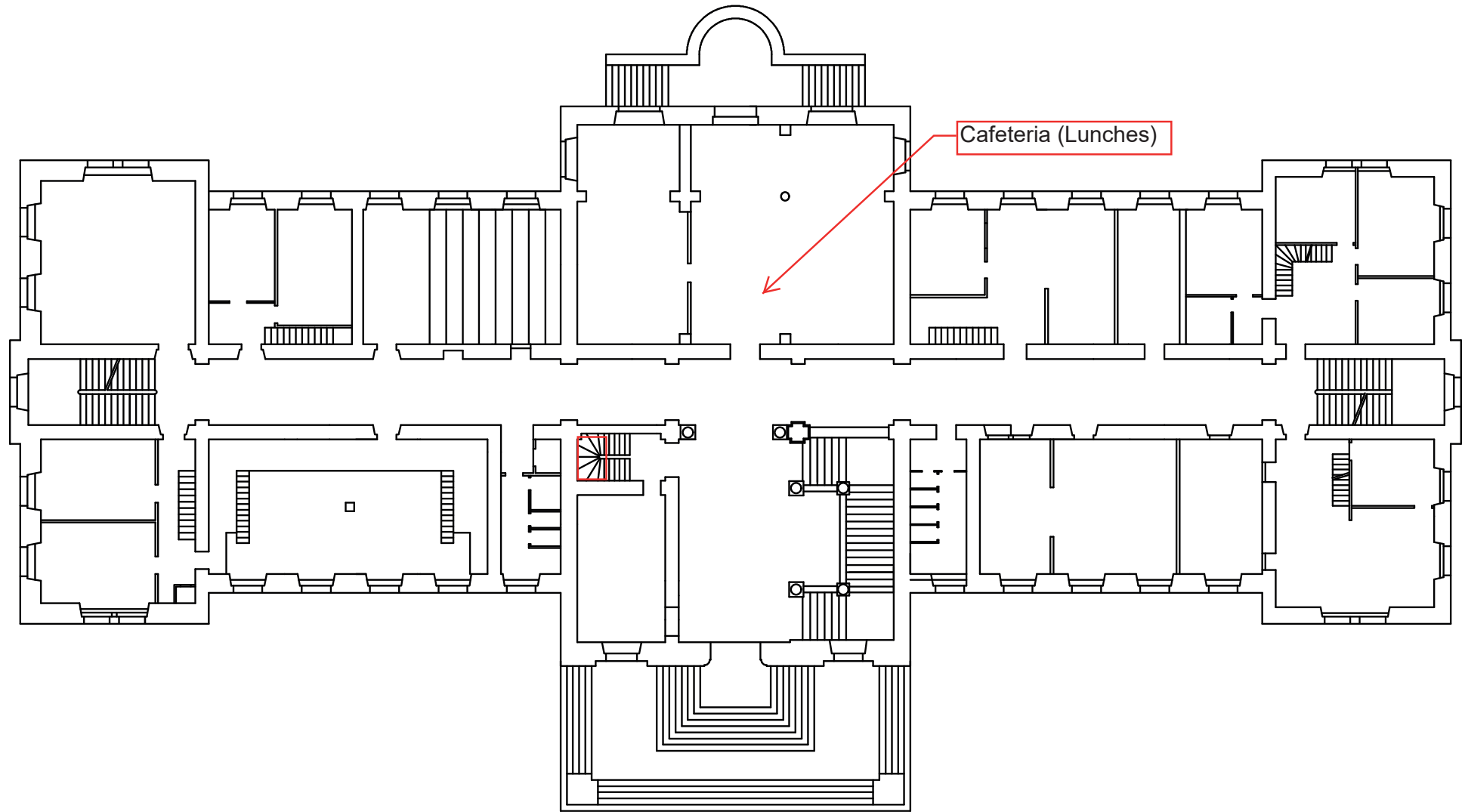




University of Neuchâtel
Av. du 1er-Mars 26
(Lunch 12 & 13 September)

Abram-Louis Breguet 2

LAKE



GROUND FLOOR