

# IM/MOBILITY AND PERIPHERALIZATION

... in a Swiss Valley, a Faroese Island, and a Maltese city

Emmanuel Charmillot, Oliver Pedersen, Anna Wyss, Janine Dahinden, and Tania Zittoun  
University of Neuchâtel, MAPS and IPE  
oliver.pedersen@unine.ch / emmanuel.charmillot@unine.ch

IP34  
TRANSNATIO-  
NALISATION

## Starting point:

- Following calls to “de-urbanise”, “de-nationalise”, and “de-migrantize” migration studies and a mobility perspective.
- Instead of defining the “where”, “who”, and “what” a priori, this become part of the research and answered abductively.

## Research questions:

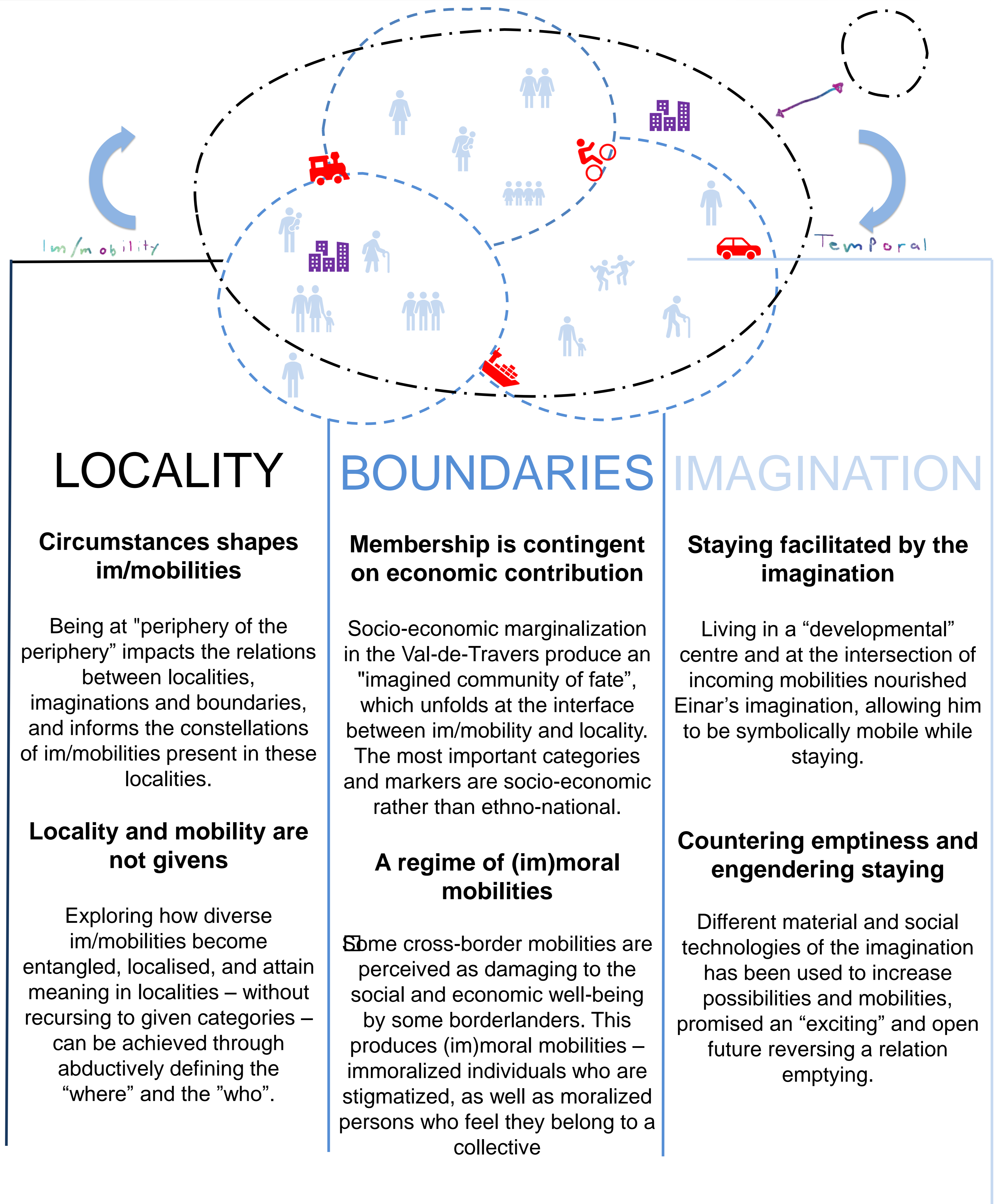
- How are boundaries and borders drawn, experienced, and contested in relation to different im/mobility practices?
- How does different material and social technologies of the imagination engender or inhabit im/mobilities?

## Methodology:

- Several months of ethnographic field work in different localities, supplemented by 70+ qualitative interviews, 3.5 focus group, as well as archival and desk research.

## Main “Output”:

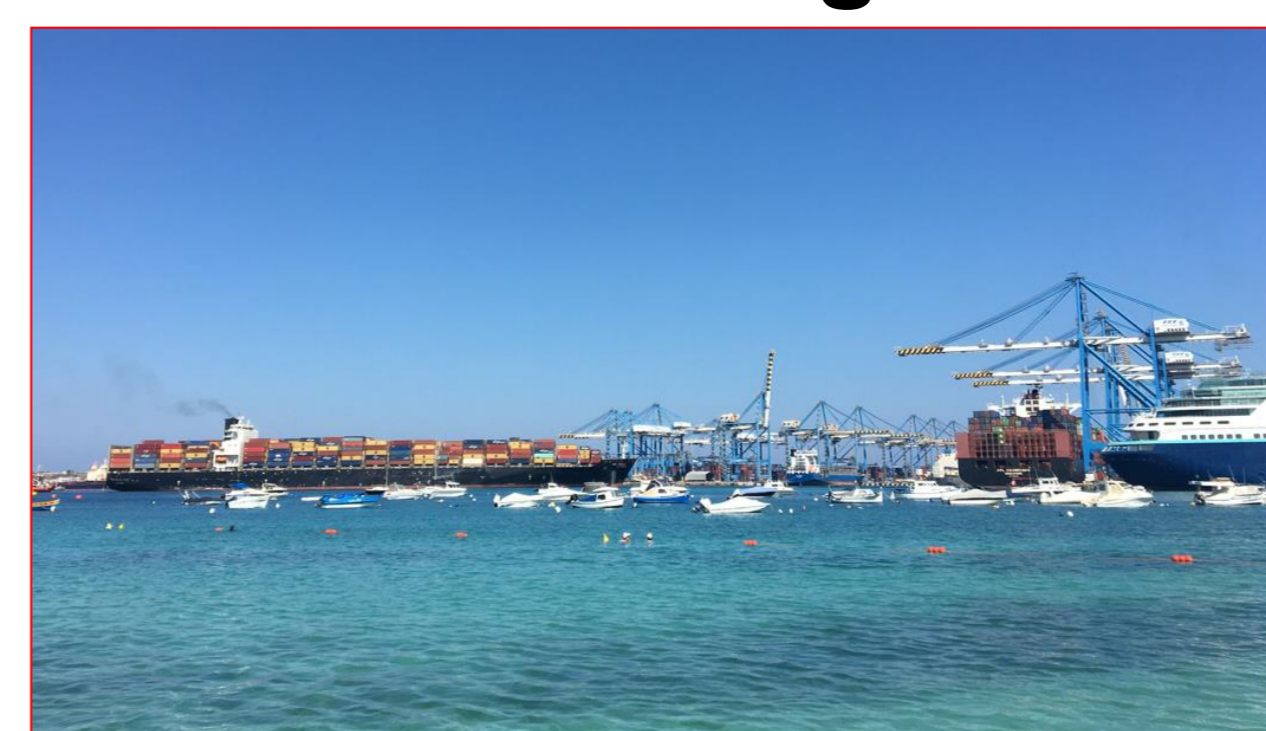
- Special Issue accepted in *Mobilities* with contributions from Bridget Anderson, Tim Cresswell, Noel Salazar, Nina Glick Schiller, and others.
- Charmillot, E. (2021). (Im)moral Mobilities in a Swiss Borderland. *Journal of Borderlands Studies*.
- Pedersen, O. & Zittoun, T. (2021). “I have been born, raised, and lived my whole life here” – Perpetually on the move while remaining still. *International Review of Theoretical Psychologies*
- Charmillot, E. & Dahinden, J. (2021). Mobilities, locality and place-making : understanding categories of (non-) membership in a peripheral valley. *Mobilities*.



### Val-de-Travers



### Birzebbuga



### Suðuroy

