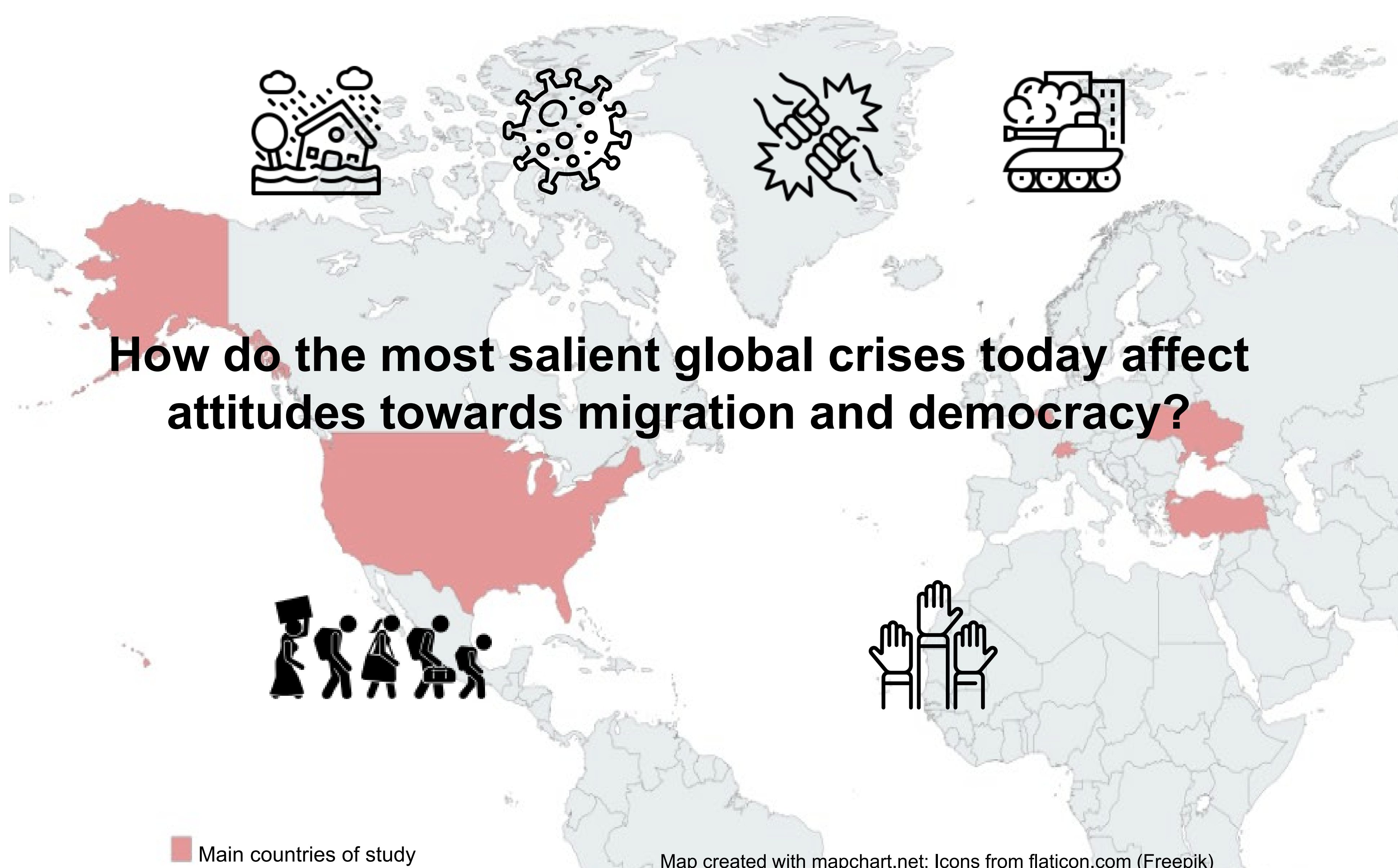


Attitudes Towards Migration and Democracy in Times of Intertwined Crises



We investigate how objectifiable events and system-endemic crises impact identity, emotions, tolerance, and solidarity with migrants affected by crises, in countries in the Global North and South.

1 How are people's attitudes and behavioural intentions towards migration affected by exposure to crisis and threat depictions? How do different facets of identity and intergroup emotions intervene?

Findings thus far

- In response to the war in Ukraine and mass displacement of Ukrainians, European identification predicts solidarity with displaced Ukrainians due to identity fusion and increased empathy
- In the context of postcolonial conflict (Chile, New Zealand), Indigenous peoples show increased anger concerning historical injustices, and political behaviour to defend their causes, when (ethnic) majorities support policies that directly address power asymmetries

Completed and upcoming data collection

- UA: N = ~600 participants; collaboration with Alfred Nobel & Dnipro National Universities led by I. Bondarevskaya
- CH: Identity facets and solidarity with different migrant groups implemented in MosaiCH 2023 and MMS 2024
- CL: N = ~1200 non-Indigenous and Indigenous participants; with R. González from Pontificia Universidad Católica de Chile
- ZA: N = ~1000 white South Africans and black (African) South Africans; with H. Swart from Stellenbosch University (summer 2024)

2 How do increased threat perceptions in times of crises affect intergroup attitudes? How do hostile intergroup attitudes erode support for democracy?

Findings thus far

- In the context of strong polarization in the USA, Switzerland, and Turkey, citizens do not behave as principled democrats but rather use their understanding of the demos to support or reject undemocratic penalties against minority politicians and policies or express politically intolerant opinions against immigrants criticising the government.
- In spite of the exceptional nature of bilateral border closures, support for these measures followed conventional patterns of attitude formation during the COVID-19 pandemic.
- Migrants (noncitizens) could profit from online emotional support during COVID-19 lockdown, as it made them feel less stressed. This was not the case for highly mobile individuals or natives.

Upcoming data sources / analysis

- CH : perceptions of democracy of Afro-descendent individuals (planned for 2024)
- ZA: pilot study conducted in 2023, full data collection planned for summer 2024 in collaboration with S. Masuku of the University of Cape Town and A. Filindra of the University of Illinois at Chicago.

Published and planned output (Selection)

- Buyuker, B., Filindra, A., Gandenberger, M. K., Green, E. G. T. & Manatschal, A. (under review). Ethno-racial minority representation and national majority members' support for democratic norms.
- Gale, J., Yogeewaran, K., Kende, J., Vanderklei, M., Osborne, D., Gonzalez, R., Sibley, C., & Green, E. G. T. (under review). Macro-level climate and minority voice: How Indigenous multiculturalism relates to collective action.
- Michel, E., Manatschal, A., Green, E. G. T. (resubmitted). Explaining support for closing borders during the COVID-19 pandemic: Immigration attitudes, Covid-19 exposure, or pandemic politics?
- Politi, E., Gale, J., Roblain, A., Bobowik, M., & Green, E. G. T. (2023). Who is willing to help Ukrainian refugees and why? The role of individual prosocial dispositions and superordinate European identity. *Journal of Community and Applied Social Psychology*, 33, 940-953.
- Vétois, M., Sontag, K., Manatschal, A., Planamente, N., Kim, J., & Falomir-Pichastor, J. M. (2023). Overcoming Social Interactions Stress during COVID-19 Lockdown: The Role of Individuals' Mobility and Online Emotional Support. *International Migration Review*.
- Four PhD theses: M. Vétois and C. Geisser – defences in 2024; D. Tampise Klebo and O. Jadeau – ongoing.

Project Team

Project Leaders: Eva G. T. Green, Anita Manatschal, Juan M. Falomir-Pichastor

Collaborators: Irina Bondarevskaya, Jessica Gale, Mia K. Gandenberger, Christopher Geisser, Orlane Jadeau, Daniska Tampise Klebo, Matthieu Vétois